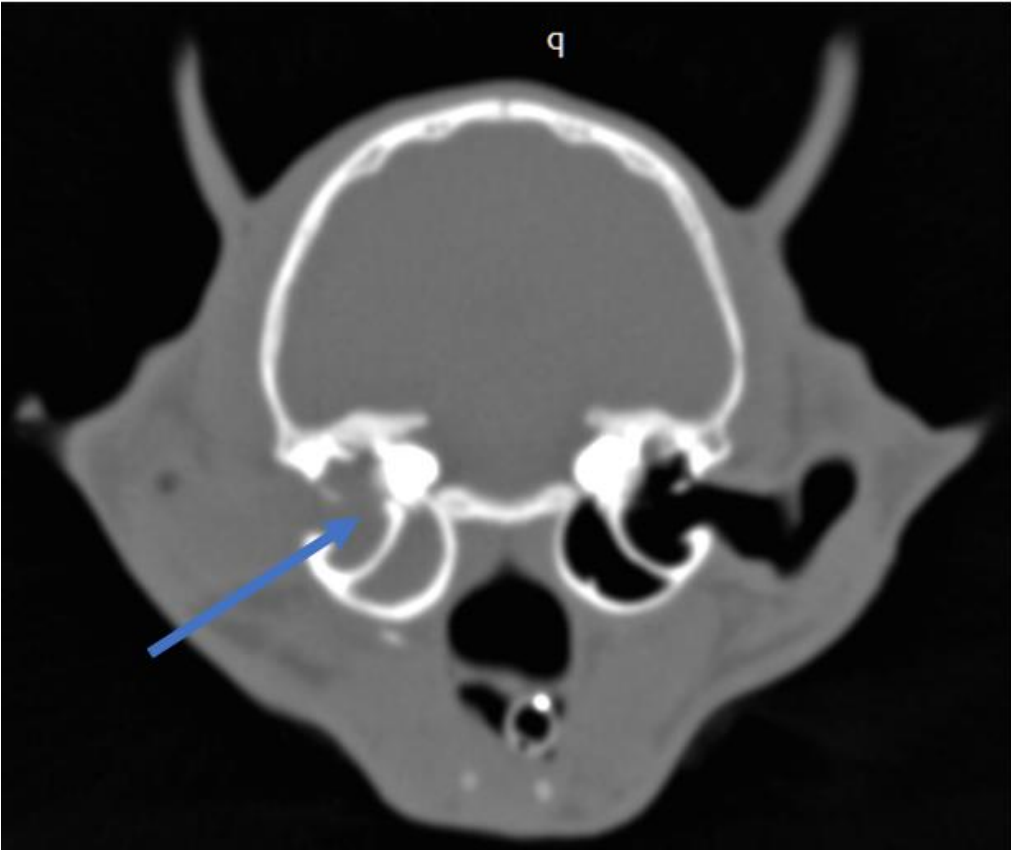
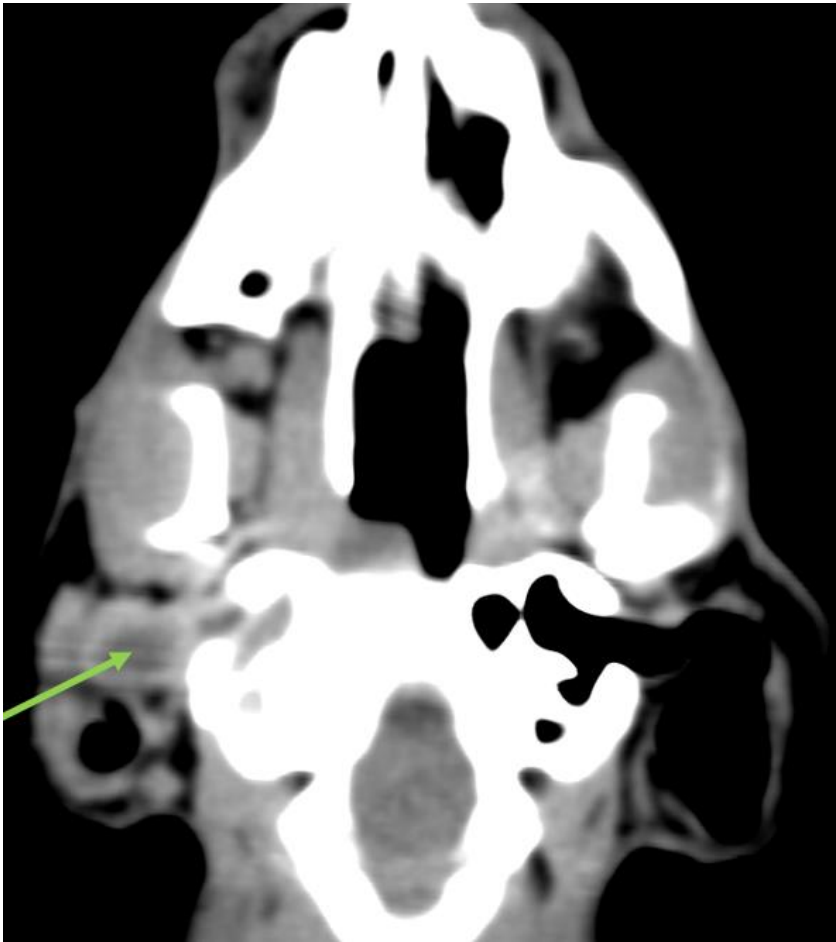
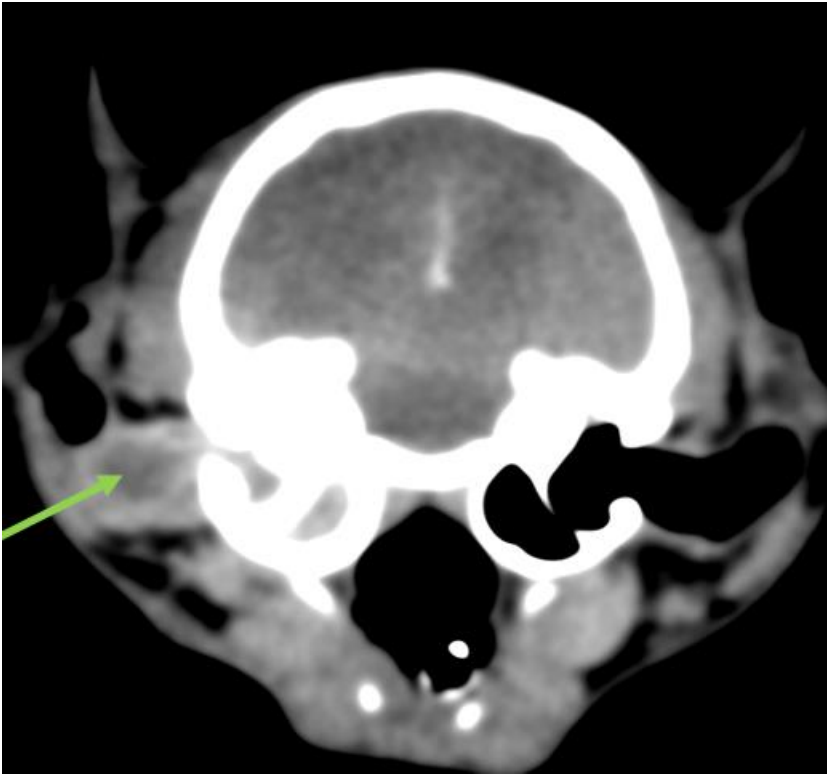


Cat with an auditory inflammatory polyp affecting the right ear canal, the bulla and the nasopharynx. A 6-month-old European shorthair with a history of polyps behind the soft palate and in the right ear. A pink polyp is visible in the right external ear canal.

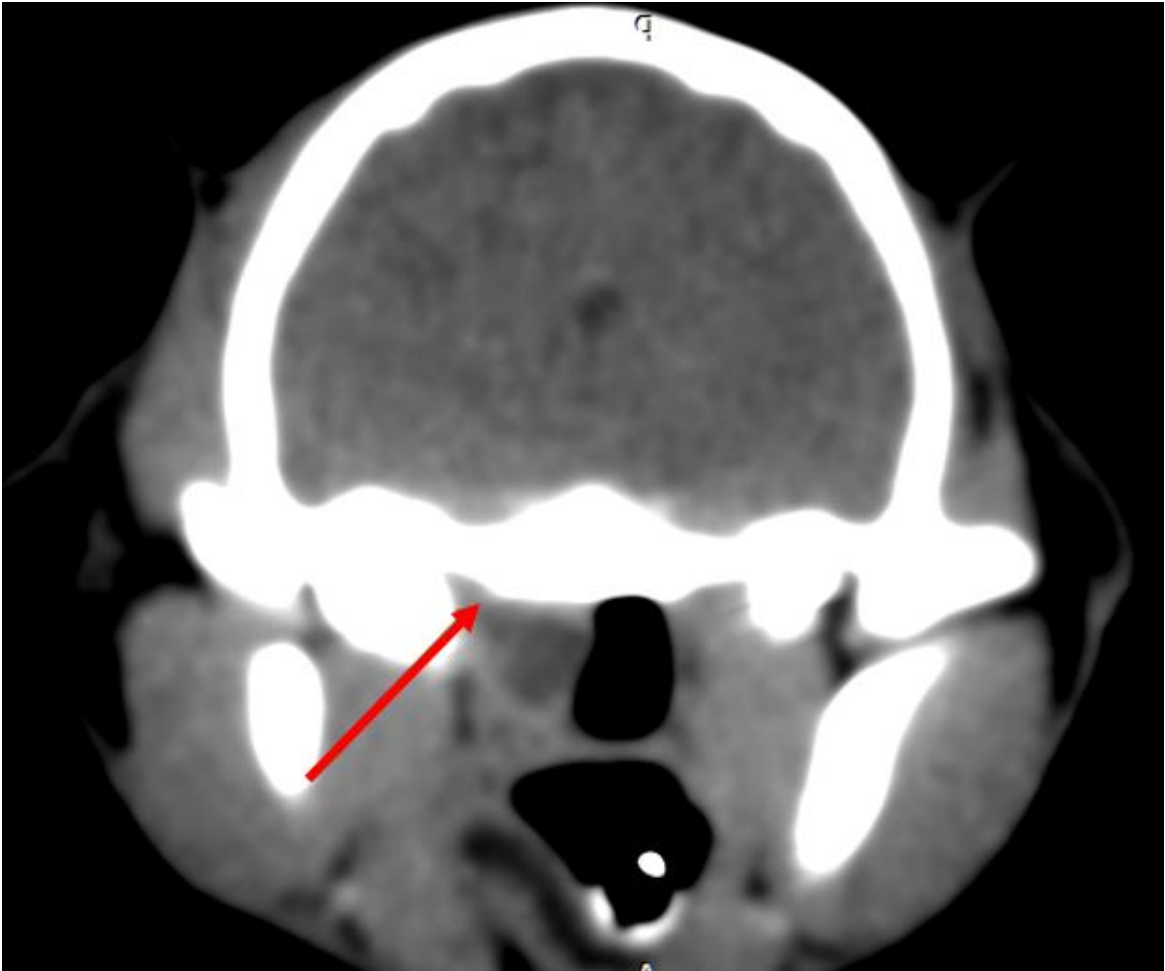
The right tympanic bulla (blue arrow) is filled with soft tissue attenuating material.



The polyp is extending in the right external ear canal with rim enhanced characteristics (green arrows).



There is a connection of the mass with the auditory tube by the stalk-like structure (red arrow).



The nasopharyngeal polyp (yellow arrow) is seen as a well-defined mass with strong rim enhancement. In this cat, there is a connection between the nasopharyngeal mass, the tympanic bulla and the external ear canal mass. Nasopharyngeal polyps have a characteristic postcontrast appearance of a well-circumscribed pedunculated mass with strong rim enhancement.

